

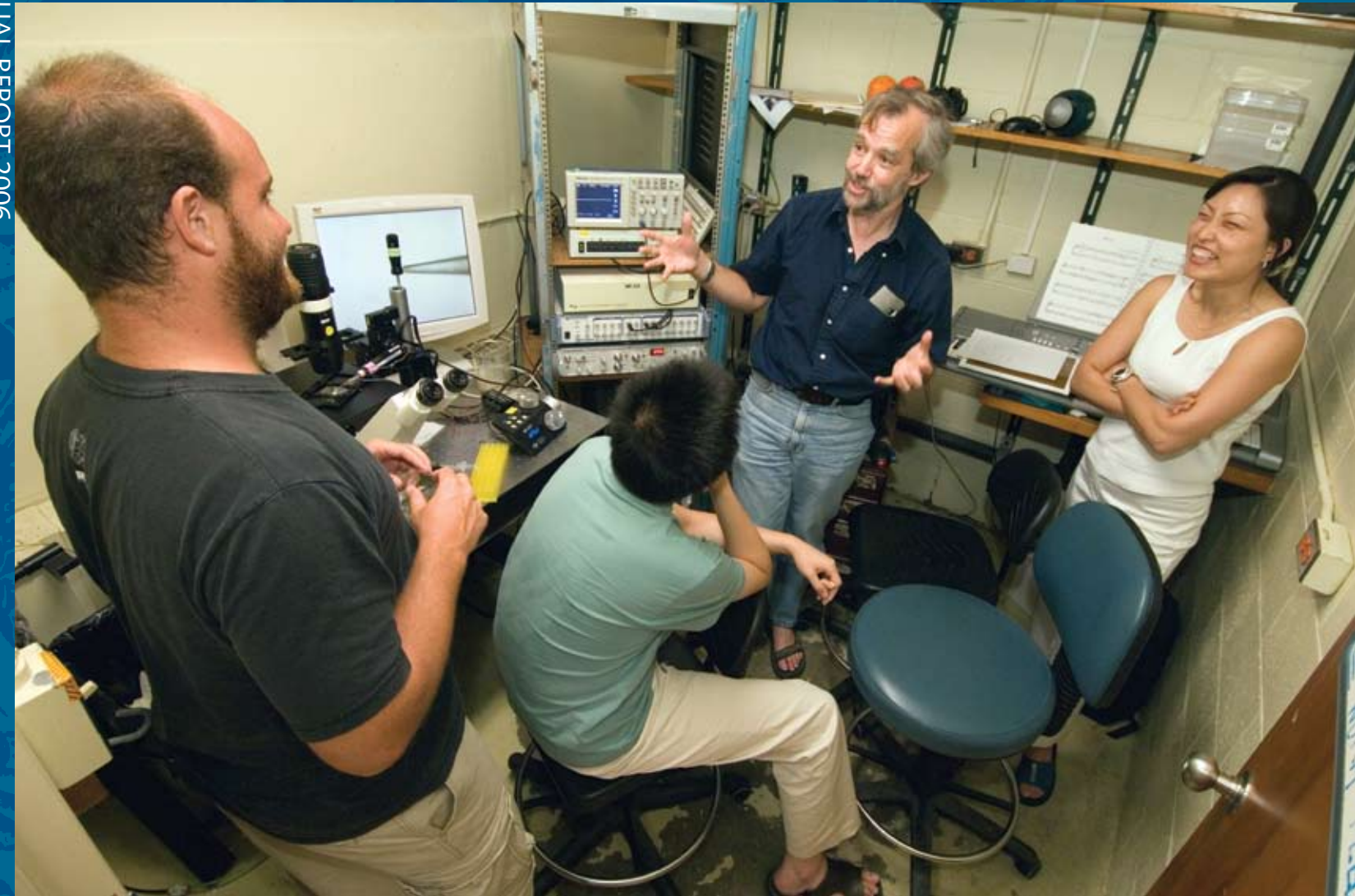
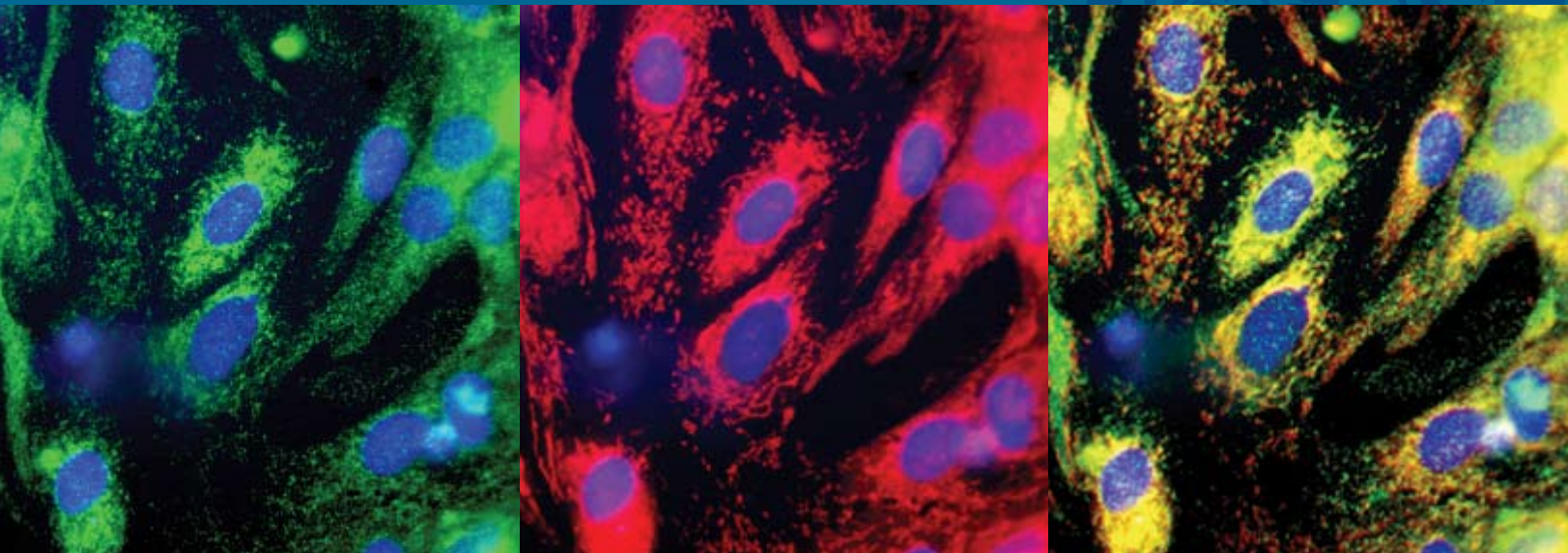
MBL  
7 MBL Street  
Woods Hole, MA 02543

Non-profit Org.  
U.S. Postage  
PAID  
Plymouth, MA  
Permit #55

MBL | Biological Discovery in Woods Hole • ANNUAL REPORT 2006

MBL | Biological Discovery in Woods Hole

## Collaborations



ANNUAL REPORT 2006

*Photos:*

*T. Kleindinst: front cover, p. 2, 3, 4, 5, 8, 10, 11, 14, 15, 16, 17, 20, 23, 26, 27, 28, 33, 34, 36, 39, 40, 41, 45, 48, 52, 54, 55, 59, 60, 61, 64, 69, 70, 72, 75, 80, 88*

*Back cover: P. Smith, L. Collis, H. Li, and E. Jonas*

*Table of Contents: P. Oldham*

*p. 3: D. Lee (artist's rendering)*

*p. 5: (bottom, left) J. Cherry*

*p. 6: K. Patal; K. Wiens*

*p. 7: E. Heart and L. Collis*

*p. 8: (top) D.J. Patterson, L. Amaral-Zettler, and V. Edgcomb, MBL micro\*scope; (bottom right) Royal NIOZ*

*p. 9: S. Murray, M. Hoppenrath, J. Larsen, and D.J. Patterson, MBL micro\*scope*

*p. 12, 13: C. Lowe*

*p. 14: (bottom) B. de Sainte Phalle*

*p. 17: (top) S. Bordenstein; (bottom) Dennis Kunkel, Inc. and S. Bordenstein. Colored by D. Patterson*

*p. 19: J. Hobbie*

*p. 20: (top, and bottom left) J. Hobbie*

*p. 21: J. Loomer*

*p. 22: C. Neill*

*p. 24: M.A. and M. Alliegro*

*p. 25: (left to right) M.A. Alliegro; M Alliegro; Rensselaer/Kris Qua*

*p. 31: H. Luther*

*p. 32: M. Shribak and S. Inoué*

*p. 33: (top, left to right) A. Kuzirian; R. Hanlon*

*p. 36: (top) L. Lui*

*p. 37: H. Li, E. Jonas, L. Collis, and P. Smith*

*p. 38: M. Brown*

*p. 42: MBL micro\*scope*

*p. 47: A. Goldman*

*p. 51: J. Cherry*

*p. 57: D. Scanlon*

*p. 58: NOAA*

*p. 65: (top) E. Haeckel; M. Person*

*p. 67: C. O. Whitman*

*p. 71: E. Haeckel*

*p. 73: (top) R. Hanlon; S. Peters*

*p. 74: Y. Kumai*

*p. 77: P. van Burren*

*p. 82: S. Livingstone*

*p. 85: K. Wiens*

*p. 86: (top) L. Kerr-Lobel; S. Casper*

*p. 90: A. Keledjian*

*p. 92: A. Reyes-Preito*

*p. 93: S. Livingstone*

*p. 94: J. Doucette*

*p. 95: K. Patel*

*p. 99: S. Donovan*

---

The MBL Annual Report is published by the Marine Biological Laboratory. Although the greatest possible care has been taken in the preparation of this record, the MBL recognizes the possibility of omissions or inaccuracies. If any are noted, please accept our apology and advise us of any corrections to be made.

Office of Communications  
MBL  
7 MBL Street  
Woods Hole, MA 02543  
www.MBL.edu

---

The Marine Biological Laboratory does not discriminate in employment or in access to any of its activities or programs on the basis of race, color, religion, sex, sexual orientation, national origin, ancestry, age, marital status, pregnancy, physical or mental disability, or veteran status. In addition, the MBL is committed to the prevention and elimination of sexual harassment, as well as other forms of unlawful harassment, in the workplace. Through training programs and disseminated information, MBL strives to educate its employees, students, faculty, and visitors on these important issues.